



SABRE

AFFORDABLE LUXURY FIFTH WHEELS

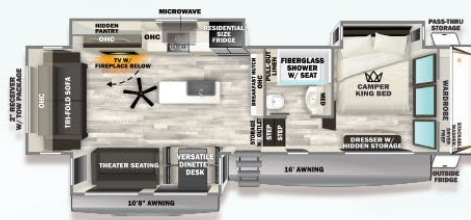


Model 2026 Resource Guide

SABRE

AFFORDABLE LUXURY FIFTH WHEELS

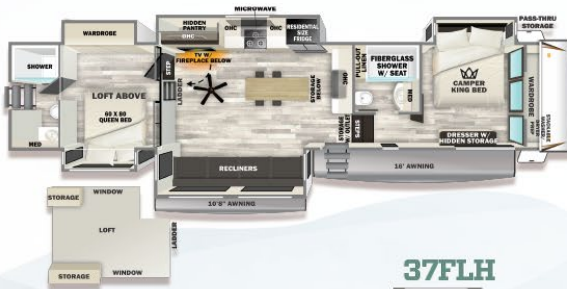
32GKS



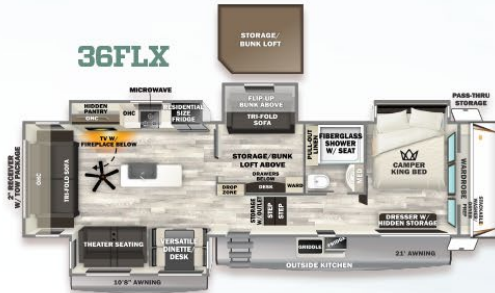
33RLP



36DBB



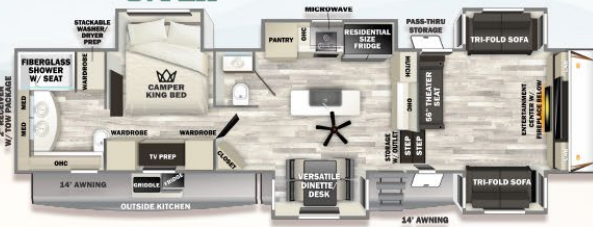
36FLX



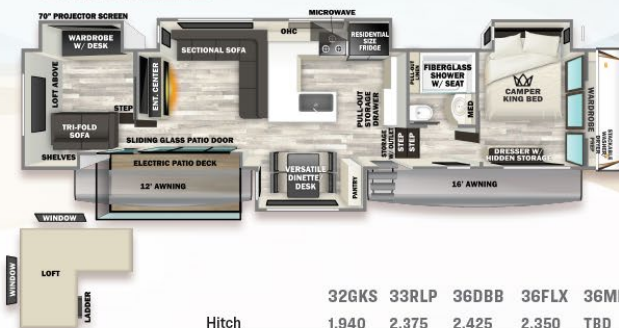
36ML



37FLH



37RVMILES



38DBL



SCAN THIS CODE FOR MORE DETAILS.
FORESTRIVERINC.COM/SABRE

	32GKS	33RLP	36DBB	36FLX	36ML	37FLH	37RVMILES	38DBL
Hitch	1,940	2,375	2,425	2,350	TBD	2,515	2,370	2,310
UVW	10,658	11,948	13,243	12,503	TBD	12,503	13,613	13,073
CCC	2,850	2,747	3,182	2,800	TBD	2,800	2,757	3,237
Length	34' 6"	39' 5"	43' 2"	41'	TBD	42' 4"	43'	42' 8"
Height	13' 5"	13' 5"	13' 5"	13' 5"	TBD	13' 5"	13' 5"	13' 5"
Width	96"	96"	96"	96"	TBD	96"	96"	96"
Fresh Tank	49	49	49	49	TBD	49	49	49
Grey Tank	60	76	114	76	TBD	68	68	106
Black Tank	30	38	76	38	TBD	68	38	68



FORESTRIVERINC.COM

SPECIFICATION DEFINITIONS: GVWR (Gross Vehicle Weight Rating) - is the maximum permitted weight of the unit when fully loaded. It includes all weight, inclusive of all fluids, cargo, optional equipment and accessories. For safety and product performance do NOT exceed the GVW. GVW (Gross Airstrike Weight Rating) - is the maximum permitted weight, including cargo, fluids, optional equipment and accessories that can be safely supported by a combination of all axles. UVW (Unloaded Vehicle Weight) - is the typical weight of the unit as manufactured at the factory. It includes all weight of the unit (cargo) and tongue pin and LP Gas. The UVW does not include cargo, fresh propane tanks, and all optional equipment and accessories. *Estimated average based on standard build and optional equipment. CCC (Cargo Carrying Capacity) - is the maximum weight available for fresh propane tanks, cargo, and all optional equipment and accessories. It is equal to GVW minus UVW. Available CCC based on maximum fresh propane tanks (2) 30 lbs per tank. Before filling the fresh propane tanks, weigh the tanks and any tank preparation to ensure capacity. *Estimated average based on standard build and optional equipment. Each Forest River RV is weighed at its manufacturing facility prior to shipping to a dealer facility for the extended service program. The actual unit and its cargo carrying capacity is applied to every Forest River RV prior to leaving our facilities. The load capacity of your unit is distributed by weight and by axle, so you cannot necessarily use all available space when loading your unit.

2026 Standard Sabre Packages

CONVENIENCE PACKAGE

- 50 AMP DETACHABLE MARINE STYLE POWER CORD
- ELECTRIC AUTO-LEVEL SYSTEM
- HEATED, FORCED AIR UNDERBELLY WITH ENCLOSED GATE VALVES
- PVC ROOF MEMBRANE
- THERMAL FOIL PROTECTIVE BARRIER IN ROOF & FRONT CAP
- UNIVERSAL DOCKING STATION W/ BLACK TANK FLUSH AND SHOWER
- VACUUM BOND LAMINATED SIDEWALLS AND SLIDE OUTS
- 2 ADJUSTABLE POWER AWNING WITH LED LIGHTING
- ALUMINUM WHEELS W/ EZ LUBE HUBS
- ADJUSTABLE STABLE STEPS (PRIMARY ENTRANCE)
- CONVENIENT SEWER HOSE STORAGE
- EXTERIOR TV HOOKUP WITH CO-AX CONNECTION
- SLAM LATCHES ON BAGGAGE DOORS
- FRICTION HINGE ENTRY DOOR
- HIGH GLOSS GELCOAT FRONT CAP W/LED LIGHTING
- OUTDOOR LP QUICK CONNECT
- TIRE PRESSURE SAFETY SENSORS
- LARGE FOLDING ENTRY ASSIST HANDLE (MAIN ENTRANCE)
- SOLAR REFLECTIVE WINDOWS
- BLACK GLASS ENTRY DOOR
- TANKLESS WATER HEATER
- SMART PROJECTORS IN MASTER BEDROOMS
- 4 CAMERA PREP(REAR, PASS & DRIVER, ABOVE ENTRY DOOR)
- INVERTER PREP

BISTRO KITCHEN PACKAGE

- SPACIOUS FRIDGE
- REAL WOOD LUMBERCORE CABINETS
- WORKSTATION FARM SINK
- AMBIENT ACCENT LIGHTING (KITCHEN & LIVING AREA)
- BLACK OPAL APPLIANCE ACCENTS
- SOLID SURFACE COUNTERTOPS
- 30" MICROWAVE
- CEILING FAN

ULTIMATE COMFORT PACKAGE

- ZEBRA SHADES (MAIN LIVING AREA & KITCHEN)
- TWIN 15K BTU DUCTED AIR CONDITIONERS W/ THERMOSTAT
- OVERSIZED TALL SLIDEOUTS
- SKYLIGHT MASTER BATHROOM
- ATTIC FAN
- TRI-FOLD SLEEPER SOFA (32GKS, 36FLX, 37FLH, 37RVMILES, 38DBL)
- SOFT AMBIENT DÉCOR PENDANT LIGHTING
- LARGE RESIDENTIAL SMART TV
- LINOLEUM FLOORING (MAIN FLOOR & UPPER DECK)
- DUAL HIGH OUTPUT CHARGING PORTS THROUGHOUT
- EXCLUSIVE MK DESIGN RESIDENTIAL COLLECTION
- DRYMAX STURD-I-FLOOR OSB SUBFLOOR
- OVER-SIZED SLIDER WINDOWS
- SMART PROJECTOR W/SCREEN
- POCELAIN STOOL
- CAMPER KING BED
- OVER-SIZED BED SLIDES
- STACKABLE WASHER/DRYER PREP

* All information contained in this brochure is believed to be accurate at the time of publication. However, during the model year, it may be necessary to make revisions and Forest River, Inc., reserves the right to make all such changes without notice, including prices, colors, materials, equipment and specifications as well as the addition of new models and the discontinuance of models shown in this brochure. Therefore, please consult with your Forest River dealer and confirm the existence of any materials, design or specifications that are material to your purchase decision. Litho. U.S.A FOR 2391 P&W: 2024.02.26

Sabre 2026 Enhancements

ALL MODELS	
BEDROOM OTTOMAN IN MASTER BEDROOMS	37RVMILES
HIDDEN STORAGE IN TOP OF DRESSER IN MASTER BEDROOMS	SWIVEL DINETTE TABLE/DESK
PROJECTOR SCREENS IN MASTER BEDROOMS	FLIP UP COUNTERTOP EXTENSION
OUTLET/STORAGE FOR ROBOTIC SWEEPER UNDER INTERIOR STEPS	38DBL
LED MEDICINE CABINET ALL MAIN BATHROOMS	SWIVEL DINETTE TABLE/DESK
ONE PIECE MOLDED FIBERGLASS SHOWER	UPGRADED OUTSIDE KITCHEN W/ FRIDGE AND GRIDDLE
FULL PROFILE FRONT CAP (ALLOWS FOR MORE HEADROOM AND STACKABLE WASHER DRYER PREP)	TOWING PACKAGE- 3,000 LBS
CAMERA PREP OVER ENTRY DOOR	FLIP UP COUNTERTOP EXTENSION
LARGER OUTSIDE GRAB HANDLE	FEATURES REMOVED
NON-SKID FLOORING IN PASS-THRU STORAGE	HEAT AND MASSAGE ON THEATRE SEATS
TALLER / DEEPER BED SLIDES	LIVING ROOM OTTOMAN- 36DBB, 36ML, 33RLP
TALLER SLIDE BOXES	HIDDEN STORAGE IN HEADBOARD
32GKS	2026 MODEL LINEUP
HINGED END TABLES W/ STORAGE	32GKS, 33RLP, 36FLX, 36DBB, 36ML, 37FLH, 37RVMILES, 38DBL
SWIVEL DINING TABLE/DESK	
FLIP UP COUNTERTOP EXTENSION	
TOWING PACKAGE - 3,000 LBS	
33RLP	
NEW PATIO BLINDS	
SWIVEL DINING TABLE/DESK	
FLIP UP COUNTERTOP EXTENSION	
TOWING PACKAGE- 3,000 LBS	
36DBB	
NO FLOORPLAN SPECIFIC CHANGES JUST STANDARD 2026 ENHANCEMENTS	
36FLX	
HINGED END TABLES W/ STORAGE	
SWIVEL DINING TABLE/DESK	
UPGRADED OUTSIDE KITCHEN W/ FRIDGE AND GRIDDLE	
FLIP UP COUNTERTOP EXTENSION	
TOWING PACKAGE- 3,000 LBS	
36ML	
HINGED END TABLE W/ STORAGE	
SWIVEL DINING TABLE/DESK	
37FLH	
SWIVEL DINING TABLE/DESK	
UPGRADED OUTSIDE KITCHEN W/ FRIDGE AND GRIDDLE	
TOWING PACKAGE- 3,000 LBS	



SABRE

Quality Construction



EXTERIOR

- 9 Solar Reflective Windows
- 10 High Density Block Foam Insulation
- 11 2" Vacuum Bonded Side Walls
- 12 Flip-up Sturdy Step
- 13 Tire Pressure Sensors
- 14 8 Lug Wheels
- 15 Welded Aluminum Framed Sidewalls
- 16 Auto Level
- 17 Enclosed, Insulated, and Heated Underbelly with Dedicated Duct Work from Furnace
- 18 2" Vacuum Bonded Slide Boxes
- 19 Color Infused Gel Coat Aerodynamic Front Cap

ROOF

- 1 Four System Slide Seal
- 2 Roof Membrane with Lifetime Warranty
- 3 Roof Mounted Solar Panel
- 4 Dual 15k BTU Air Conditioners
- 5 Walkable Roof Decking
- 6 Thermal Reflective Foil Wrap (Roof & Front Cap)
- 7 Insulated Racetrack A/C Duct System
- 8 5" Bowed Truss Roof Design

INTERIOR

- 20 Full Length Front to Back Floor 2' x 3' Joists
- 21 DryMax Sturd-I-Floor OSB Subfloor
- 22 Batton Insulated Ceiling, Floor, Cap and Rear Wall
- 23 Solid Wood Stile Built Cabinetry



FOR MORE INFORMATION ON THE SABRE PRODUCT LINE **SCAN THE QR CODE.**

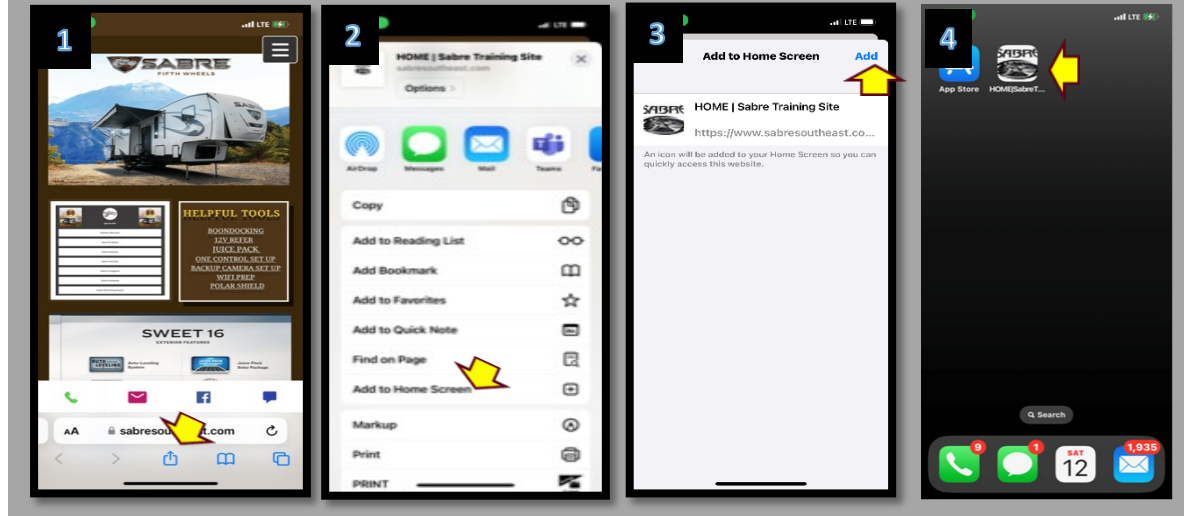


FOREST RIVER

SABRE TRAINING SITE

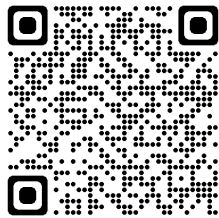


IPHONE



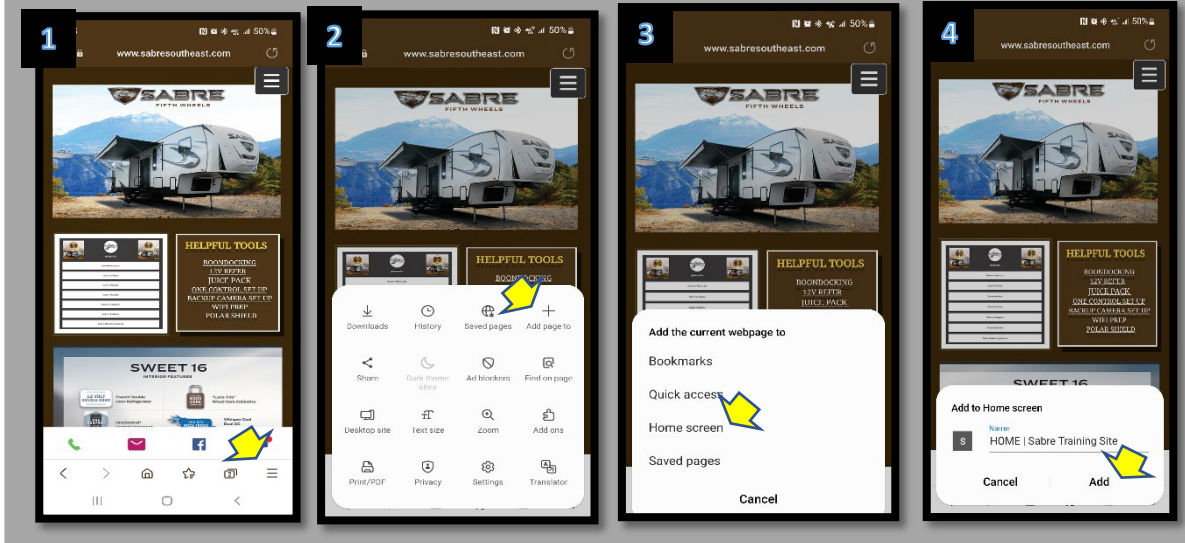
Set Up Instructions

SCAN THE QR CODE OR ENTER THE WEB ADDRESS BELOW AND FOLLOW THE STEPS TO SET UP THE LINK ON YOUR MOBILE DEVICE



HOME | Sabre Training Site
[\(\[sabresoutheast.com\]\(http://sabresoutheast.com\)\)](http://sabresoutheast.com)

ANDROID



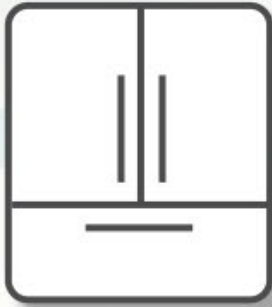


SABRE

Sweet 16

Loaded with features!

1



Spacious Refrigerator

A spacious fridge makes RV travel easier, more efficient, and less stressful.

- Fewer trips to the grocery store
- Pack more food than a standard RV fridge allows
- Stock up in advance for long hauls or remote stays
- Spend more time exploring, less time restocking



SABRE



2

Stackable Washer/Dryer Prep

Washer and dryer prep brings added freedom, comfort, and self-sufficiency to RV life.

- Do laundry on your schedule, without relying on campground facilities
- Pack fewer clothes and free up more closet space
- Stay fresh and clean during extended trips
- Add convenience and value with the option to install a stackable unit



SABRE

** Washer and dryer not included. **

RESIDENTIAL
— **SOLID** —
SURFACE
COUNTER TOPS

3

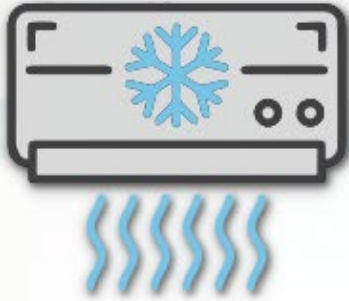
Solid Surface Countertops

- Solid surface countertops offer a residential feel and are beautifully contoured for your family's safety.
- The smooth and durable surface makes cleaning and sanitizing a breeze.
- The seamless edges prevent all peeling, moisture penetration, and mold.



SABRE

4



DUAL Air Conditioning units provide a combined 30,000 BTUs with 50 amp service.

- Low Profile
- Dual Climate Control
- Energy Efficient
- Whisper Quiet
- Circular “Race Track” Ducting

Dual 15K BTU Whisper Cool Air Conditioners



SABRE



5

Real Wood Cabinetry with Solid Wood Doors

In house, custom-built cabinetry combines real wood lumber core with true Amish craftsmanship and hidden hinges, to provide high quality cabinets with structural integrity and durability.



SABRE



6

Tankless Water Heater

- Tankless water heater provides endless hot water to owners that are connected to city water or fresh water supply.
- Provides the optimum performance for an RV's plumbing
- Quiet, brushless motor
- 12V power operates at less than 3 AMPs
- Freeze protection provides reliable winter use
- Designed specifically for recreational vehicles
- Microprocessor continuously monitors the inlet water flow and temperature
- Digital Control Panel



SABRE



Ambient Accent Lighting

Kick back and enjoy our relaxing ambient accent lighting.

- Soft White LED is easy on the eyes
- Enjoy ambient lighting featured in kitchen and main living area



SABRE



8

Each Sabre is equipped with a fully interactive touch screen, two independently driven front landing gear legs, and two rear leveling jacks.

This system offers owners the ability to auto level the RV without the use of leveling blocks or the need to manually deploy jacks one at a time.

The easy-to-read, interactive touch screen operates all leveling jacks manually or just press OK and walk away!

- Fast & lightweight system
- User-friendly touchpad, with both auto and manual mode
- Large footpads
- Consistently levels and stabilizes
- Auto reconnect and hitch height memory allows for hassle-free hookup to tow vehicle
- Fully interactive touch screen
- Manual overrides on all jacks

Auto Leveling System



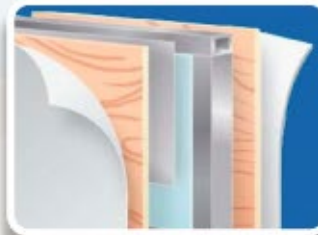
SABRE



9

2" Thick Vacuum Bonded Laminated Walls & Slide Boxes

- Each sidewall and slide wall is cured 15-18 minutes at 144 tons of pressure to provide a stronger bond than our competitor's pinch rolling process
- Double-welded aluminum sidewalls and slides are specifically engineered for each floor plan
- Electro-Galvanized Steel Backers (EGS) are laid in place prior to lamination to provide better screw retention
- Each wall is tested for thorough glue coverage and bonded strength



SABRE

10



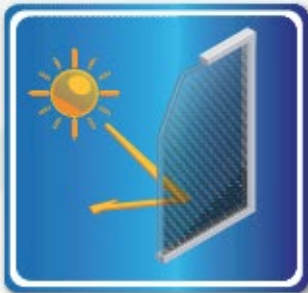
Tire Pressure Sensors

- The indicator on EZ Read Tire Caps alerts you to changes in your tire pressure.
- Even if your vehicle comes installed with a tire pressure monitoring system, not all TPMS show which tire is low. With EZ Read Tire Caps, you can quickly see which tire needs more air.
- Extends the life of tires
- Improves traction & mileage
- Easy to use
- Replaces gauges & dials
- Fits all standard air valves
- Helps prevent flats & blowouts



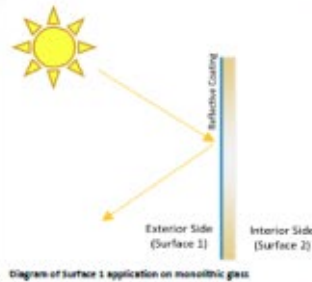
SABRE

11



Solar Reflective Glass Windows provide daytime privacy and more effectively prevents the fading & deterioration of interior furnishings, fabrics, and surfaces.

- Keeps interior cool by blocking heat from the sun
- 3mm thickness
- Reflective glass provides a beautiful aesthetic compared to clear or tinted glass



Solar Reflective Windows



SABRE

SOLAR REFLECTIVE WINDOWS



ALPHA WOLF

ARCTIC WOLF

CHEROKEE
BLACK LABEL

CHEROKEE
WOLF DEN

MINI LOFT



SABRE

CHEROKEE
TIMBERWOLF

CHEROKEE
GREY WOLF

CHEROKEE
WOLF PUP

ROGUE
ARMORED

WOLF PACK

SUPERIOR HEAT CONTROL.

Solar reflective glass is specifically engineered to reflect a substantial portion of the sun's rays, significantly reducing the amount of heat that penetrates the interior. This feature is paramount for maintaining a cooler environment inside the travel trailer without overly relying on air conditioning. This capability outperforms dark tint and clear glass, which absorb more heat and can lead to higher interior temperatures.

ENHANCED UV PROTECTION.

While dark tints can offer UV protection, solar reflective glass typically provides superior protection against harmful UV rays. It blocks out a significant percentage of these rays, more effectively protecting the skin and eyes of occupants and preventing the fading and deterioration of interior furnishings, fabrics, and surfaces.

ENERGY EFFICIENCY.

By significantly reducing heat buildup inside the trailer, solar reflective glass enhances the vehicle's energy efficiency. It reduces the need for air conditioning, which not only conserves energy but also extends the lifespan of the vehicle's HVAC system and reduces fuel consumption or electrical usage when stationary. This efficiency is a step up from what dark tint and clear glass can offer, especially in regions with high solar intensity.

PRIVACY AND AESTHETICS.

Solar reflective glass offers a sleek, modern look that can be aesthetically pleasing. During the day, its reflective surface provides privacy from the outside without sacrificing the view from the inside. This dual benefit of privacy and unobstructed views is something that dark tint can partially provide and clear glass cannot offer at all.

DURABILITY AND MAINTENANCE.

Solar reflective glass is often more durable and scratch-resistant than traditional tinted films applied to clear glass. It's designed for longevity and maintains its reflective properties without the risk of peeling or bubbling, common issues with aftermarket dark tints.

COMFORT AND VISIBILITY.

Solar reflective glass strikes an optimal balance between reducing glare and maintaining visibility. It ensures that the interior is comfortable for the eyes even in bright sunlight, without the excessive darkness that can come from heavy tints, ensuring safety and enjoyment of the scenery.



FOREST RIVER

CHEROKEE FAMILY OF BRANDS

FORESTRIVERINC.COM



12

Juice Pack Solar Package

Each Sabre is equipped with the Juice Pack feature for off-grid support. It includes a 200W roof mounted solar panel (expandable to 600W), dual battery box, battery disconnect, volt meter and 40AMP solar controller.

- No portable battery box required
- Flip the battery disconnect switch to the “on” position and your Sabre is powered up
- Works well with 2,000W inverter prep



SABRE



Our DSLR-C40 Solar controller is optimized the simplest most effective way to install with a 1 -200w panel system or a multi-panel 600w system.



Easy dealer or end user upgrades using our parallel wiring MC4 Y adaptor cables, simply choose to add 1 or 2 extra 200 Watt panels and configure using the correct Y adaptor.



Higher shade tolerance on upgraded multi-panel systems, since panels don't affect each when wired in parallel.



Stabilized voltage: Parallel wiring maintains a consistent voltage that matches the output of a single panel or multi-panel system.

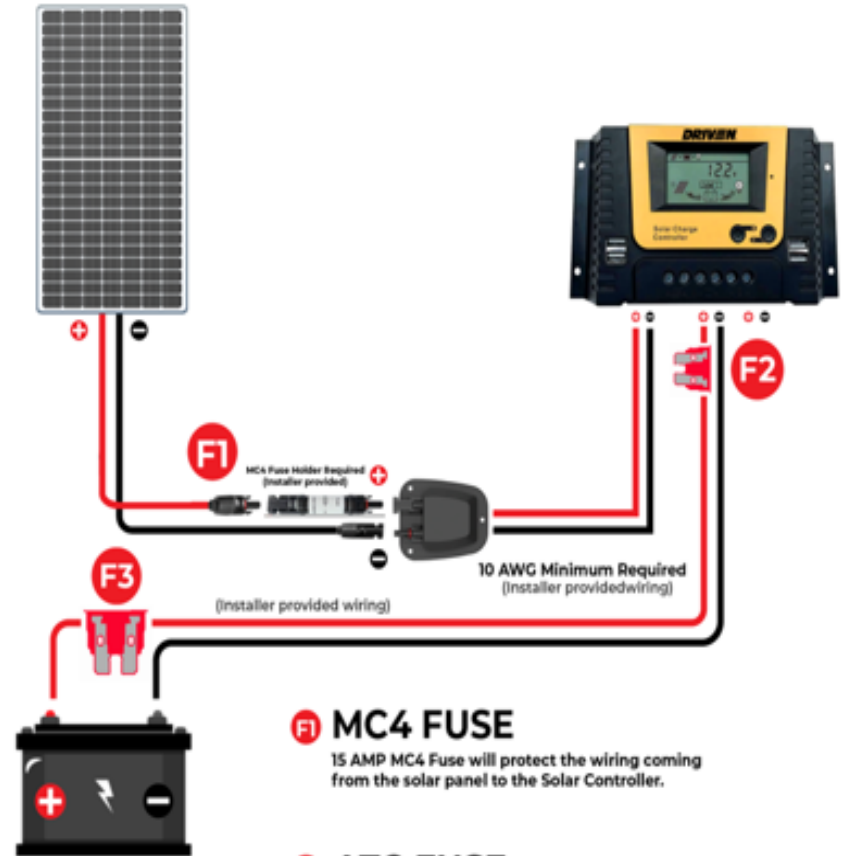


Upgraded system reliability: if one solar panel fails in a parallel system, the other panels continue to operate, ensuring continued energy production and increased system reliability.



OTHER BRANDS

When wired in series, if a solar panel fails, the entire system will be affected and not function to full capacity.



F1 MC4 FUSE

15 AMP MC4 Fuse will protect the wiring coming from the solar panel to the Solar Controller.

F2 ATC FUSE

20 AMP ATC Fuse will protect wiring with current coming out of the Solar Controller going towards the Battery.

F3 ATC FUSE

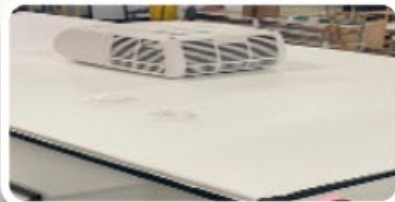
20 AMP ATC Fuse will protect the wiring connection coming out of the Battery running toward the Solar Controller.



Extended Season Polar Package

ROOF CONSTRUCTION:

- Thermal Foil Wrap throughout roof & front cap
- 16" On Center Trusses
- 3/8" Decking
- Industry Leading Protective Roof



FLOOR & UNDERBELLY CONSTRUCTION:

- DryMax Sturd-I-Floor OSB Subfloor
- Ducted Heat to Underbelly
- Enclosed Dump Valves
- Easy Access Underbelly for Full Serviceability
- Insulated flooring
- Protective wrap allows breathability with water protection



SABRE

14

4-Point Camera Prep

4-point camera prep offers enhanced safety, convenience, and peace of mind during your travels.

- Improve visibility for safer driving
- Easily add cameras later for a fully equipped monitoring system
- Simplify parking and maneuvering in tight spaces
- Gain confidence while towing or navigating tricky areas



SABRE

15

Industry Leading Protective Roof Membrane



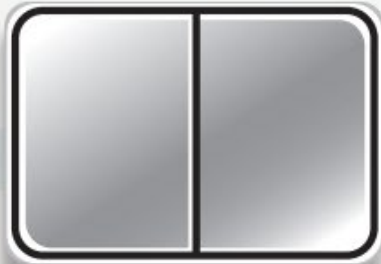
Industry Leading Protective Roof

- Lifetime warranty on PVC roof membrane
- Maximum protection against water penetration
- Highly flexible roof membrane
- Mold & mildew resistant



SABRE

16



Oversized Vented Windows

Oversized vented windows enhance your RV experience with natural light, fresh air, and improved comfort.

- Enjoy a brighter, more open feel inside
- Maximize airflow and ventilation for a more comfortable interior
- Reduce the need for air conditioning with improved air circulation



SABRE



You Deserve

SABRE PRICE	BRAND X PRICE
\$	\$

MORE!

Scan for Sweet 16 Features!



SABRE

BRAND
X

VACUUM BOND LAMINATION vs. PINCH ROLLED

TANKLESS HOT WATER HEATER

SPACIOUS FRIDGE

30" MICROWAVE

SMART PROJECTOR W/ SCREEN IN MASTER BEDROOMS

TV INCLUDED IN ALL LIVING ROOMS

8 LUG WHEELS vs 6 lug

7000 LB AXLES vs 5500-6000 LB

ACCENT LIGHTING UNDER KITCHEN ISLAND AND ABOVE CROWN MOLDING

STACKABLE WASHER/DRYER PREP

RACK AND PINION FLOOR SLIDES

TRIPLE SLIDE DOORS ON WARDROBE CLOSET

INTERIOR CONVENIENCE CENTER

LINOLEUM THROUGHOUT (CARPET FREE)

REAL WOOD CABINETRY vs PARTICLE BOARD

MOLDED FIBERGLASS SHOWER W/ SEAT

SOLID SURFACE KITCHEN COUNTERTOPS

PET PANTRY

AUTO LEVELING SYSTEM WITH HITCH MEMORY

2,000 WATT INVERTER PREP W/ OUTLETS WIRED

NO OPTIONAL UPCHARGES

200 WATT JUICE PACK SOLAR SUPPORT SYSTEM (600W PREP)

OVERSIZED VENTED SOLAR REFLECTIVE WINDOWS

CUSTOM HUCKBOLTED AND ECO COATED FRAMES

2026 WARRANTY COVERAGES



AXELS

- Limited 8 Years

GRAPHICS

- 5 Years

LINOLEUM

- 7 Years

TIRES

- 1 Year No Excuses Guarantee
- 2 Year Roadside Assistance
- 5 Year Radial ST Tires (Manufacturer's Defects)
- Lifetime Structural All Wheels

12 MONTH ROADSIDE ASSISTANCE

This service provides you with 24/7 coverage for the following services:

- Towing
- Jump Starts
- Tire Assistance
- Delivery of Fuel and Emergency Fluids
- Locksmith/Lockout Service
- Winch Out
- Technical Support
- RV Mobile Mechanic



FOREST RIVER FACTORY WARRANTY 1 YEAR

AIR CONDITIONER

- 2 Years

FURNACE

- Limited 2 Years

OVEN

- 1 Year

TANKLESS WATER HEATER

- Limited 2 years

FRAME

- 2 Years

AUTO LEVELERS

- 2 Years

All information contained on this website is believed to be accurate at the time of publication. However, during the model year, it may be necessary to make revisions and Forest River, Inc. reserves the right to make changes without notice, including prices, colors, materials, equipment and specifications as well as the addition of new models and the discontinuance of models shown on this website. Therefore, please consult with your Forest River, Inc. dealer and confirm the existence of any material, design or specifications that are material to your purchase decision

SABRE FRAMES

A STRONG FOUNDATION
IS THE BASIS FOR
STRONG CONSTRUCTION



NXG Frame

The NXG Frame is a superior quality, highly engineered frame that provides customers with a strong, light weight, consistent foundation on which to confidently build the floorplan to your specific design.

PRECISELY ENGINEERED FOR EACH SPECIFIC MODEL

- Mechanically and CNC applied to achieve the desired positive camber, specific to each floorplan
- CNC controlled rail fabrication eliminated inconsistency of frame components, including spring axle hanger placement
- Manual welding is minimized. Common components are robotically welded for consistent quality
- CNC and robotic welding eliminate inconsistent placement of frame component parts.
- **SABRE DOES NOT BUILD YOUR "HOUSE" ON ANOTHER HOUSE'S FOUNDATION**

FULLY PROTECTED FROM CORROSION

- Component parts are painted separately, then assembled.
- E-coated and powder coated which eliminates corrosion caused by incomplete paint coverage
- **COMPETITORS ARE UNABLE TO OFFER FULL PROTECTION FROM CORROSION**

SUPERIOR STRENGTH

- Manufactured with HSLA – High Strength Low Alloy Prime Steel with specifically controlled properties
 - HSLA eliminates frame failures due to sub-standard steel**
 - HSLA eliminates the potential for uneven main rails that cause varying camber and squareness**
- All fastened components are joined with Huck® fasteners. Huck® fasteners provide consistent clamp load
 - Huck fasteners are commonly applied the bridge construction, trucking and aerospace industries.**

SABRE RUGGED AND LOYAL PACKAGE

- UV Pain Sidewalls
 - High Performance Fiberglass
 - Azdel
 - 2 Coats of Automotive Clear Coat
- 2 18K AC's and 1 8K AC
- Black Rims
- Daylight and Midnight Sidewall Options
- Available on 37RVMILES and 36EST

FOREST RIVER
SABRE



IT'S NOT A WRAP



IT'S NEXT-GEN DIGITAL UV PAINT
PERFORMANCE, DURABILITY, AFFORDABILITY

2X BALLISTIC CLEARCOAT

PAINT-REPAIRABLE

NO SEAM LINES



AIONUV.COM



ONE YEAR OF FREE ROADSIDE ASSISTANCE

FROM THE DATE OF PURCHASE; NEW UNIT PURCHASES ONLY

Providing safety and convenience for Forest River owners and their families while on the road.

Forest River Roadside Assistance is provided to you FREE by Forest River Inc. for one year from the purchase of a new Forest River RV. Your complimentary first year of coverage includes the following services:

TOWING

TIRE ASSISTANCE*

MOBILE TIRE SERVICE*

JUMP STARTS

DELIVERY OF FUEL AND EMERGENCY FLUIDS*

WINCH OUT

RV MOBILE MECHANIC*

DEALER LOCATOR SERVICES

TECHNICAL SUPPORT

LOCKSMITH/LOCKOUT SERVICE*

*Customers are responsible for the cost of delivered parts, fluids, repairs, and/or labor.

If you purchased your RV
PRIOR TO 1/1/2024, call

866-209-2895

If you purchased your RV
ON OR AFTER 1/1/2024, call

800-608-2751



Emergency Roadside Assistance is applicable when you are traveling with your RV or using your RV in a Campground/RV Park and applies for mechanically disabling events.

TOWING

Towing your RV, or the tow vehicle when towing your RV, to the nearest qualified repair facility.

TIRE ASSISTANCE

Changing flat tires using a mounted and inflated spare tire, delivering comparable tires to disablement sites, or towing vehicles to a tire facility. The cost of a delivered replacement tire, alignment, mount and dismount, and balancing is not covered. Customers are responsible for all charges related to on-site repairs, including but not limited to parts and labor costs.

MOBILE TIRE SERVICE

In the event of a tire-related breakdown, a mobile tire service company may be dispatched to mount a like tire to the customer's vehicle. Mobile Tire Service is not available in all areas. Towing to the nearest qualified repair facility will be provided if Mobile Tire Service is not available. Customer responsible for all parts and labor fees.

JUMP STARTS

Jump-starting vehicles' dead batteries or towing vehicles to qualified repair facilities.

DELIVERY OF FUEL AND EMERGENCY FLUIDS

Delivering fuel, oil, and water, as necessary, to remedy disablements. Customers are responsible for the cost of fluids.

WINCH OUT

For RVs that can be accessed from an established and maintained road, highway, thoroughfare, or street.

RV MOBILE MECHANIC

Dispatching of a mechanic to the site of mechanically-disabled vehicles. Customer is responsible for all charges related to on-site repairs, including but not limited to parts and labor costs.

DEALER LOCATOR SERVICES

Assisting customers to the closest qualified service facility when they're in unfamiliar territory.

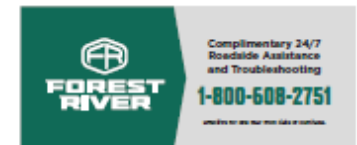
TECHNICAL SUPPORT

Features 24/7 technical assistance from our staff of RVIA/RVDA and ASE Certified technicians, who speak directly with customers to troubleshoot operational issues. Should you need emergency roadside assistance, our vast network of providers offers a wide range of services to handle your unique RV.

LOCKSMITH/LOCKOUT SERVICE

Providing locksmith services, opening locked vehicles, and/or obtaining replacement keys. Customers are responsible for all charges related to on-site repairs, including but not limited to parts and labor costs.

For your convenience, look for
this sticker in your new unit:



SABRE



CUSTOMER SERVICE CONTACT INFORMATION



Follow prompts to Sabre

260.499.2100



Email for dealers only

sabrewarranty@forestriverinc.com

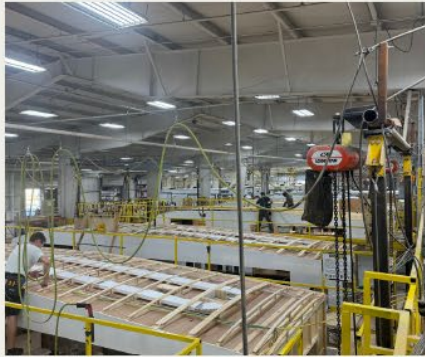
sabreparts@forestriverinc.com



Link for retail customer

<https://forestriverinc.com/rvs/contact-us/sabre>

WHY CHOOSE SABRE?



Quality

Sabre is dedicated to crafting high-quality campers designed for durability and maximum usability. Our commitment to excellence is reflected in our choice of materials and processes, such as 5/8" tongue-and-groove plywood flooring, vacuum-bonded sidewalls, and 2" sidewalls with high-density block foam insulation. These features elevate your camping experience but also minimize future maintenance costs, allowing you to focus on enjoying your adventures.

Luxury

Sabre offers customers a truly luxurious travel experience with our thoughtfully designed, feature-rich units. Enjoy high-end amenities like solid surface countertops, exquisite wooden core cabinetry, and residential-style kitchen appliances, among many other remarkable features. Every detail is crafted to elevate your journey and provide the comfort of home wherever you roam.

Affordability

With Forest River's incredible buying power, Sabre delivers luxurious features typically found in expensive brands — all at a fraction of the cost! Just imagine the adventures you could embark on and the experiences you could create with all that money saved! The possibilities are endless!

Intentionality

Sabre intentionally designs each floor plan to maximize every inch of space for ultimate usability and convenience. With a focus on efficiency, we offer a variety of smart storage solutions in every unit, including cleverly hidden storage options, ensuring you can fully utilize your space and enjoy a clutter-free experience.



OUR MISSION

At Sabre, we are committed to redefining the RV experience by delivering high-quality, luxury 5th wheel trailers that remain accessible to all. Our mission is to combine exceptional craftsmanship, innovative design, and affordable pricing, allowing families and adventurers to explore the open road without compromise. We strive to create a community of enthusiasts who value comfort, style, and unforgettable journeys, all while enjoying the freedom of affordable luxury.